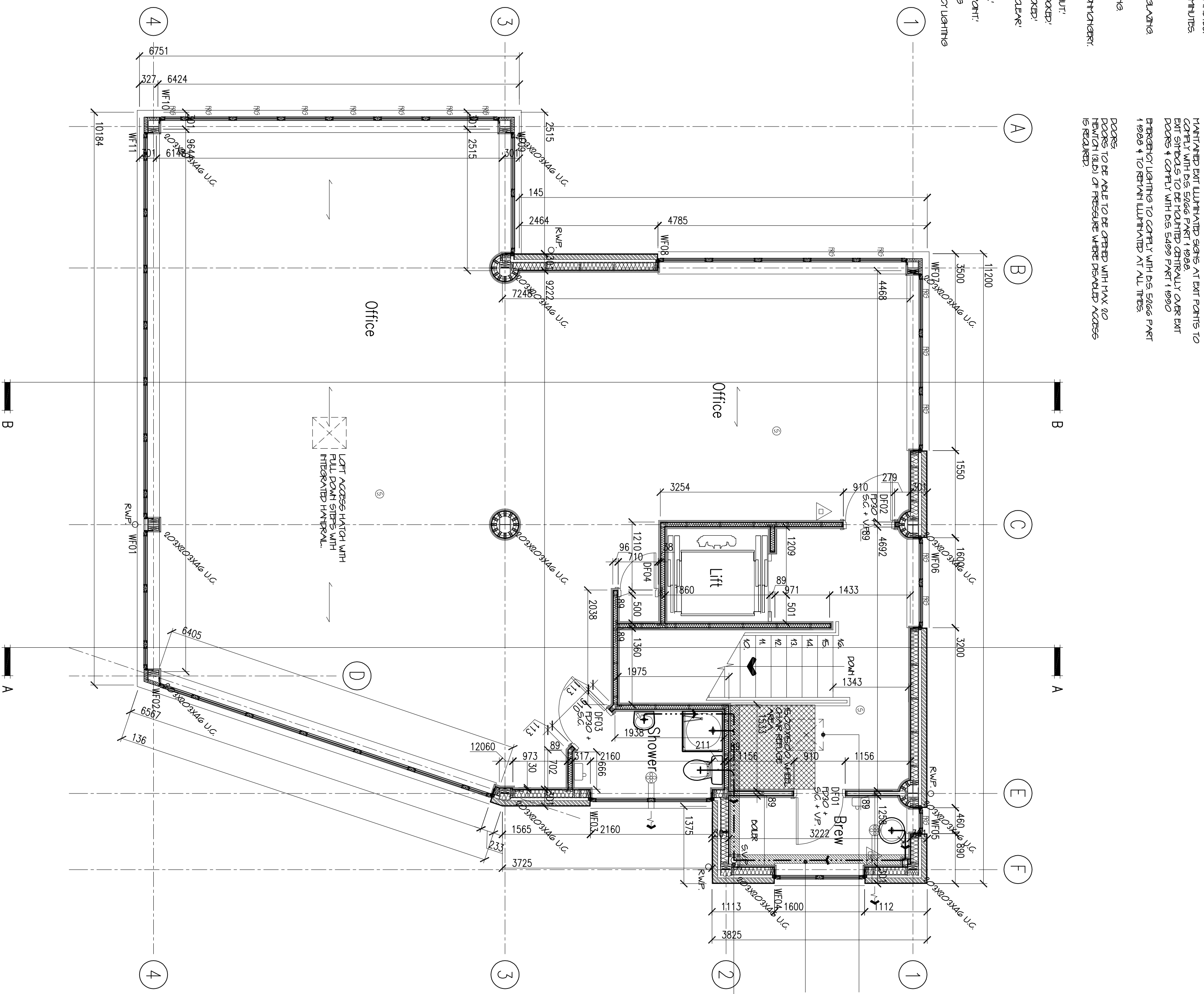


- 9. WATER EXTRACTOR
- 10. FLOOR EXTRACTOR
- 11. FLOOR EXTRACTOR
- 12. FLOOR EXTRACTOR
- 13. FLOOR EXTRACTOR
- 14. FLOOR EXTRACTOR
- 15. FLOOR EXTRACTOR
- 16. FLOOR EXTRACTOR
- 17. FLOOR EXTRACTOR
- 18. FLOOR EXTRACTOR
- 19. FLOOR EXTRACTOR
- 20. FLOOR EXTRACTOR
- 21. FLOOR EXTRACTOR
- 22. FLOOR EXTRACTOR
- 23. FLOOR EXTRACTOR
- 24. FLOOR EXTRACTOR
- 25. FLOOR EXTRACTOR
- 26. FLOOR EXTRACTOR
- 27. FLOOR EXTRACTOR
- 28. FLOOR EXTRACTOR
- 29. FLOOR EXTRACTOR
- 30. FLOOR EXTRACTOR
- 31. FLOOR EXTRACTOR
- 32. FLOOR EXTRACTOR
- 33. FLOOR EXTRACTOR
- 34. FLOOR EXTRACTOR
- 35. FLOOR EXTRACTOR
- 36. FLOOR EXTRACTOR
- 37. FLOOR EXTRACTOR
- 38. FLOOR EXTRACTOR
- 39. FLOOR EXTRACTOR
- 40. FLOOR EXTRACTOR
- 41. FLOOR EXTRACTOR
- 42. FLOOR EXTRACTOR
- 43. FLOOR EXTRACTOR
- 44. FLOOR EXTRACTOR
- 45. FLOOR EXTRACTOR
- 46. FLOOR EXTRACTOR
- 47. FLOOR EXTRACTOR
- 48. FLOOR EXTRACTOR
- 49. FLOOR EXTRACTOR
- 50. FLOOR EXTRACTOR
- 51. FLOOR EXTRACTOR
- 52. FLOOR EXTRACTOR
- 53. FLOOR EXTRACTOR
- 54. FLOOR EXTRACTOR
- 55. FLOOR EXTRACTOR
- 56. FLOOR EXTRACTOR
- 57. FLOOR EXTRACTOR
- 58. FLOOR EXTRACTOR
- 59. FLOOR EXTRACTOR
- 60. FLOOR EXTRACTOR
- 61. FLOOR EXTRACTOR
- 62. FLOOR EXTRACTOR
- 63. FLOOR EXTRACTOR
- 64. FLOOR EXTRACTOR
- 65. FLOOR EXTRACTOR
- 66. FLOOR EXTRACTOR
- 67. FLOOR EXTRACTOR
- 68. FLOOR EXTRACTOR
- 69. FLOOR EXTRACTOR
- 70. FLOOR EXTRACTOR
- 71. FLOOR EXTRACTOR
- 72. FLOOR EXTRACTOR
- 73. FLOOR EXTRACTOR
- 74. FLOOR EXTRACTOR
- 75. FLOOR EXTRACTOR
- 76. FLOOR EXTRACTOR
- 77. FLOOR EXTRACTOR
- 78. FLOOR EXTRACTOR
- 79. FLOOR EXTRACTOR
- 80. FLOOR EXTRACTOR
- 81. FLOOR EXTRACTOR
- 82. FLOOR EXTRACTOR
- 83. FLOOR EXTRACTOR
- 84. FLOOR EXTRACTOR
- 85. FLOOR EXTRACTOR
- 86. FLOOR EXTRACTOR
- 87. FLOOR EXTRACTOR
- 88. FLOOR EXTRACTOR
- 89. FLOOR EXTRACTOR
- 90. FLOOR EXTRACTOR
- 91. FLOOR EXTRACTOR
- 92. FLOOR EXTRACTOR
- 93. FLOOR EXTRACTOR
- 94. FLOOR EXTRACTOR
- 95. FLOOR EXTRACTOR
- 96. FLOOR EXTRACTOR
- 97. FLOOR EXTRACTOR
- 98. FLOOR EXTRACTOR
- 99. FLOOR EXTRACTOR
- 100. FLOOR EXTRACTOR



COMPARTMENTALISE WHERE SERVICES PASS THROUGH A COMPARTMENT WHERE SERVICES PASS THROUGH COMPARTMENTS TO BE FITTED TO SUIT. ALSO REFER TO FITTING SCHEDULE DRAWINGS FOR DETAILS.

INTERNAL NON-COMBUSTIBLE PARTITIONS 38 X 89 GLS STUDING AT MAX 600/610 WITH 100MM MINIMUM INSULATION TO BE PROVIDED TO ALL PARTITIONS TO BE NON-COMBUSTIBLE AND 50MM MINIMUM TO EACH FACE TO GIVE THE 100MM RESISTANCE TO INCREASE TO 500MM. ALL PARTITIONS TO BE NON-COMBUSTIBLE AND 50MM MINIMUM TO EACH FACE TO GIVE THE 100MM RESISTANCE TO INCREASE TO 500MM. ALL PARTITIONS TO BE NON-COMBUSTIBLE AND 50MM MINIMUM TO EACH FACE TO GIVE THE 100MM RESISTANCE TO INCREASE TO 500MM.

INTERNAL NON-COMBUSTIBLE PARTITIONS 38 X 89 GLS STUDING AT MAX 600/610 WITH 100MM MINIMUM INSULATION TO BE PROVIDED TO ALL PARTITIONS TO BE NON-COMBUSTIBLE AND 50MM MINIMUM TO EACH FACE TO GIVE THE 100MM RESISTANCE TO INCREASE TO 500MM. ALL PARTITIONS TO BE NON-COMBUSTIBLE AND 50MM MINIMUM TO EACH FACE TO GIVE THE 100MM RESISTANCE TO INCREASE TO 500MM.

INTERNAL NON-COMBUSTIBLE PARTITIONS 38 X 89 GLS STUDING AT MAX 600/610 WITH 100MM MINIMUM INSULATION TO BE PROVIDED TO ALL PARTITIONS TO BE NON-COMBUSTIBLE AND 50MM MINIMUM TO EACH FACE TO GIVE THE 100MM RESISTANCE TO INCREASE TO 500MM. ALL PARTITIONS TO BE NON-COMBUSTIBLE AND 50MM MINIMUM TO EACH FACE TO GIVE THE 100MM RESISTANCE TO INCREASE TO 500MM.

INTERNAL NON-COMBUSTIBLE PARTITIONS 38 X 89 GLS STUDING AT MAX 600/610 WITH 100MM MINIMUM INSULATION TO BE PROVIDED TO ALL PARTITIONS TO BE NON-COMBUSTIBLE AND 50MM MINIMUM TO EACH FACE TO GIVE THE 100MM RESISTANCE TO INCREASE TO 500MM. ALL PARTITIONS TO BE NON-COMBUSTIBLE AND 50MM MINIMUM TO EACH FACE TO GIVE THE 100MM RESISTANCE TO INCREASE TO 500MM.

INTERNAL NON-COMBUSTIBLE PARTITIONS 38 X 89 GLS STUDING AT MAX 600/610 WITH 100MM MINIMUM INSULATION TO BE PROVIDED TO ALL PARTITIONS TO BE NON-COMBUSTIBLE AND 50MM MINIMUM TO EACH FACE TO GIVE THE 100MM RESISTANCE TO INCREASE TO 500MM. ALL PARTITIONS TO BE NON-COMBUSTIBLE AND 50MM MINIMUM TO EACH FACE TO GIVE THE 100MM RESISTANCE TO INCREASE TO 500MM.

INTERNAL NON-COMBUSTIBLE PARTITIONS 38 X 89 GLS STUDING AT MAX 600/610 WITH 100MM MINIMUM INSULATION TO BE PROVIDED TO ALL PARTITIONS TO BE NON-COMBUSTIBLE AND 50MM MINIMUM TO EACH FACE TO GIVE THE 100MM RESISTANCE TO INCREASE TO 500MM. ALL PARTITIONS TO BE NON-COMBUSTIBLE AND 50MM MINIMUM TO EACH FACE TO GIVE THE 100MM RESISTANCE TO INCREASE TO 500MM.

INTERNAL NON-COMBUSTIBLE PARTITIONS 38 X 89 GLS STUDING AT MAX 600/610 WITH 100MM MINIMUM INSULATION TO BE PROVIDED TO ALL PARTITIONS TO BE NON-COMBUSTIBLE AND 50MM MINIMUM TO EACH FACE TO GIVE THE 100MM RESISTANCE TO INCREASE TO 500MM. ALL PARTITIONS TO BE NON-COMBUSTIBLE AND 50MM MINIMUM TO EACH FACE TO GIVE THE 100MM RESISTANCE TO INCREASE TO 500MM.

Note:  
THIS DRAWING TO BE READ IN CONJUNCTION WITH  
PETIT SINGLETON MECHANICAL & ELECTRICAL  
DRAWINGS

INTERNAL NON-COMBUSTIBLE PARTITIONS 38 X 89 GLS STUDING AT MAX 600/610 WITH 100MM MINIMUM INSULATION TO BE PROVIDED TO ALL PARTITIONS TO BE NON-COMBUSTIBLE AND 50MM MINIMUM TO EACH FACE TO GIVE THE 100MM RESISTANCE TO INCREASE TO 500MM. ALL PARTITIONS TO BE NON-COMBUSTIBLE AND 50MM MINIMUM TO EACH FACE TO GIVE THE 100MM RESISTANCE TO INCREASE TO 500MM.

<b>Michael Jackson</b> CHARTERED ARCHITECTS	
Holly Cottage 223 Preston Road Gimsburgh Preston Lancs PR3 3JR	
Tel: 01772 701777	
Scale 1:50	Date 23/11/10
Dwg. No. <b>1704/06</b>	Drawn <b>JEB</b>
Rev. <b>F</b>	

Client <b>J Eaves Esq.</b>
Job Title <b>Proposed Offices of East Cliff Road Preston</b>
Drawing Title <b>First Floor As Proposed</b>
Architect <b>Michael Jackson</b> CHARTERED ARCHITECTS
Address Holly Cottage 223 Preston Road Gimsburgh Preston Lancs PR3 3JR
Tel: 01772 701777
Scale 1:50
Date 23/11/10
Dwg. No. <b>1704/06</b>
Drawn <b>JEB</b>
Rev. <b>F</b>

INTERNAL NON-COMBUSTIBLE PARTITIONS 38 X 89 GLS STUDING AT MAX 600/610 WITH 100MM MINIMUM INSULATION TO BE PROVIDED TO ALL PARTITIONS TO BE NON-COMBUSTIBLE AND 50MM MINIMUM TO EACH FACE TO GIVE THE 100MM RESISTANCE TO INCREASE TO 500MM. ALL PARTITIONS TO BE NON-COMBUSTIBLE AND 50MM MINIMUM TO EACH FACE TO GIVE THE 100MM RESISTANCE TO INCREASE TO 500MM.